

RAT - A .. /..

THRESHOLD & APPROACH LIGHT

HIGH INTENSITY - UNIDIRECTIONAL-INSET

RELATED STANDARDS

FAA : RAT-A is in accordance with FAA specifications AC-150/5345-46B L-850E

ICAO : RAT-A is in accordance with Annex 14, Vol.1, Appendix 2, to be used as threshold and approach light in CAT I, II & III conditions

NATO : RAT-A is in accordance with STANAG 3316

APPLICATIONS

➤ As high intensity threshold and approach lighting for runways in CAT I, II & III conditions

IMPORTANT FEATURES

➤ **High mechanical strength** obtained by cadmium plated iron, helps resist all kind of aircraft loads.

➤ **Optical system** simple and watertight.

➤ **Prefocused halogen lamp** is very advantageous compared to other alternatives with 1000 hours of lamp life and PK30d lamp base.



FIGURE 1

ELECTRICAL SUPPLY

6,6A through a 200W isolating transformer.

FINISH

Cadmium plated against corrosion. Lower cover is aluminium cast and anodized.

CONSTRUCTION

1. Stainless steel screw with washer
2. Optical system and cover
3. Silicone rubber gasket
4. Color filter
5. Filter holder
6. Optical system
7. Lamp, quartz halogen, prefocused PK30d
8. Silicone rubber gasket
9. Cable outlets for watertightness
10. Stainless steel screw with washer
11. Mounting base
12. Lower cover

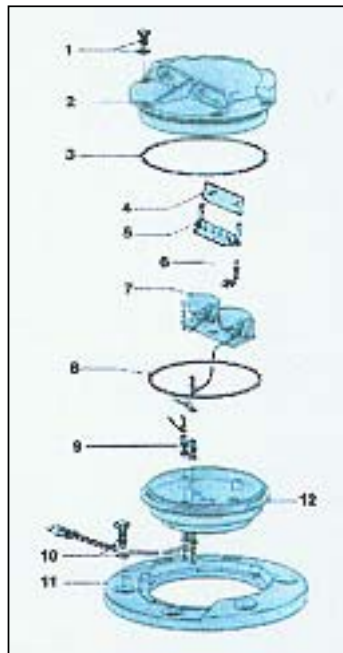


FIGURE 2



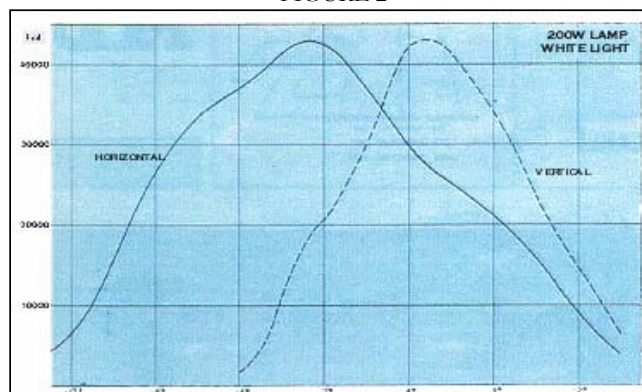
FIGURE 3

WEIGHT AND DIMENSIONS

Gross weight is 15kg.
25mm height from ground level
Outer diameter is 438mm.

PACKING INFO

In cardboard boxes of 32×32×18cm.



OPTICAL PERFORMANCE