

# T - 2045B

## TAXIWAY EDGE LIGHT

MEDIUM INTENSITY – OMNIDIRECTIONAL - INSET

### RELATED STANDARDS

FAA : T-2045B is in accordance with FAA specifications AC-150/5345-46B L-852T

ICAO : T-2045B is in accordance with Annex 14 and Aerodrome Design Manual Part 4

### APPLICATIONS

- At taxiway and apron edges
- At aircraft maneuver areas

### IMPORTANT FEATURES

- **45W halogen prefocused lamp** meets ICAO specifications.
- **Easily installed color filter**
- **No adjustments needed after re-lamping**

### STRUCTURAL FEATURES

1. A 2-pole plug to FAA L-823, mounting ring, necessary gaskets, filter, reflector and all other accessories are delivered with the light.
2. The light is protected against negative effects of dust, water or other materials.
3. Lights can directly be installed in concrete.
4. Lights are electrostatic powder painted.
5. The 45W, prefocused, quartz halogen, PK30d lamps has a rated life of 1000 hours.
6. Gaskets used for watertightness are made of silicone rubber.
7. Accumulation of water in front of the lens does not effect photometric performance.
8. All the bolts, screws and washers used are made of stainless steel.
9. All the metal units used are protected against corrosion.
10. The light has a 25mm height from ground level.

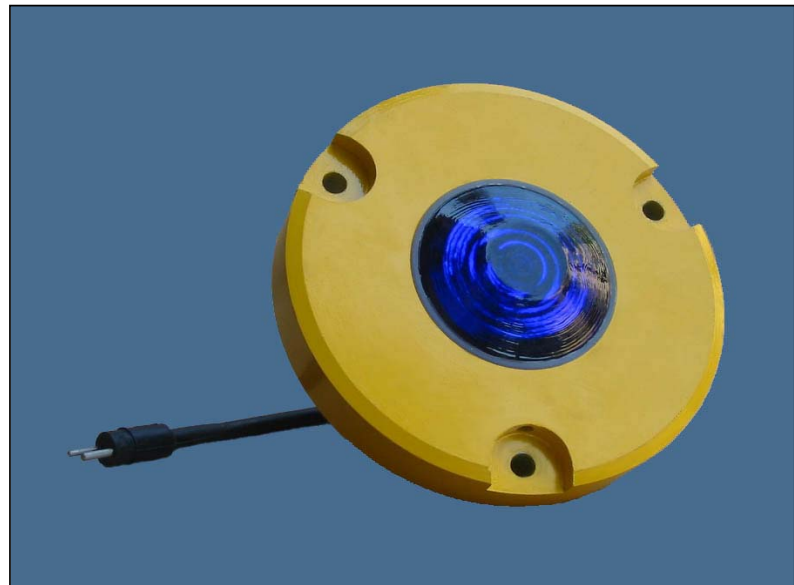


FIGURE 1

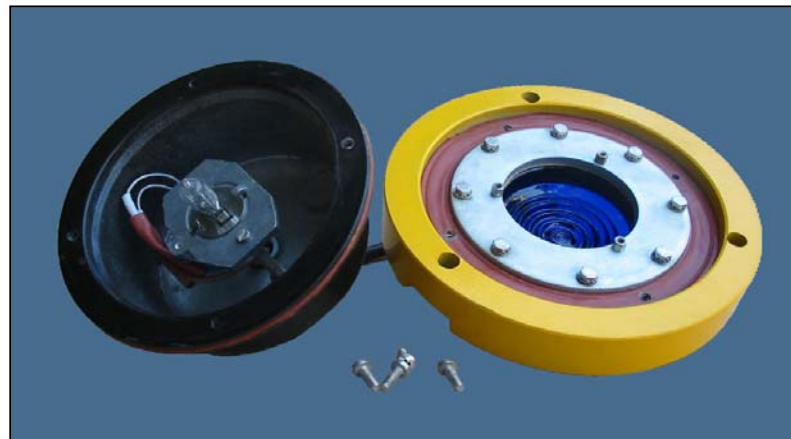


FIGURE 2

## CONSTRUCTION

---

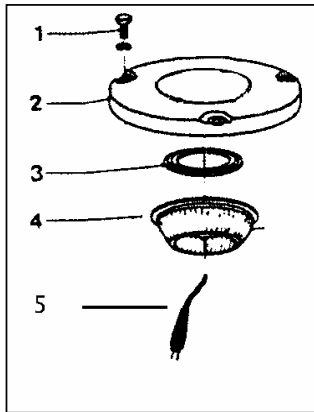
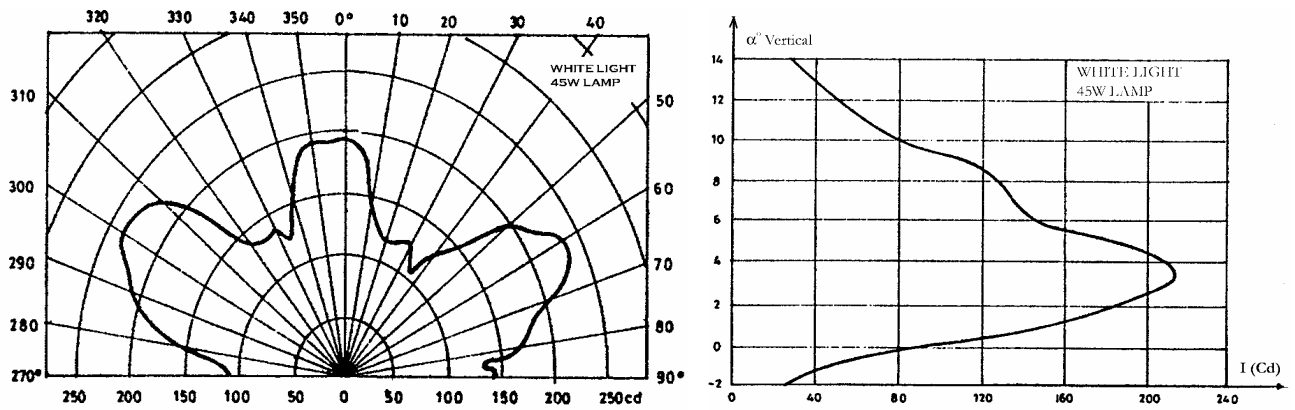


FIGURE 3

## PHOTOMETRIC PERFORMANCE

---

1. Photometric performance is in accordance with ICAO Annex 14 para. 5.3.16.
2. The light is omnidirectional (360°).
3. Lenses are prismatic and heat shock resistant.
4. 45W, quartz halogen, prefocused, PK30d lamps with a rated life of 1000 hours are used.
5. Photometric performance curves are below ;



## FINISH

---

Phosphating and baked polyester electrostatic powder coating. The color is aviation yellow and hardware is made of stainless steel.

## WEIGHT

---

Net weight is 5.5 kg.