

T - 36045... /..

HELIPORT & TAXIWAY EDGE LIGHT

MEDIUM INTENSITY - OMNIDIRECTIONAL-INSET

RELATED STANDARDS

ICAO : T-36045 is in accordance with Annex 14, Vol.2, Para. 5.3.
 NATO : T-36045 is in accordance with STANAG 3316 and 3652

APPLICATIONS

- As taxiway and apron edge light
- As helipad light
- Also used in traffic and safety lighting

IMPORTANT FEATURES

- **Needs less maintenance**, thanks to the minimum number of parts all simple and functional.
- **Lens changed easily**
- **Low consumption lamp** has 45W lamp
- **Simple installation, uninstillation**
- **Long lamp life** 1000 hours at full intensity
- **Color filters changing easily**
- **Stainless steel mounting base**
- **Aluminum cast alloy**
- **Quality guarantee** all lamps checked in factory

CONSTRUCTION

- Prismatic and heat resistant optical system
- Anodized aluminium reflector
- Silicone rubber gasket for watertightness
- 45W, PK30d, quartz halogen lamp rated 1000 hours
- 2 pole plug to FAA L-823
- Aluminium cast flange and lower body

PHOTOMETRIC PERFORMANCE

White / 45W 6,6A

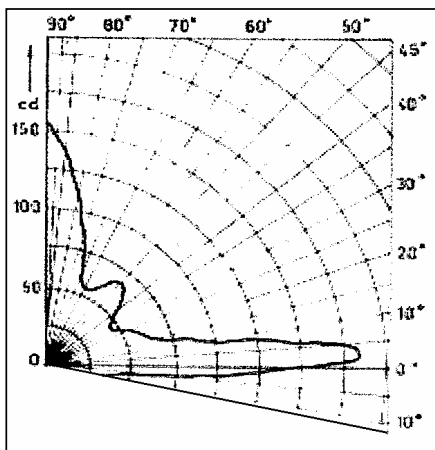


FIGURE 3

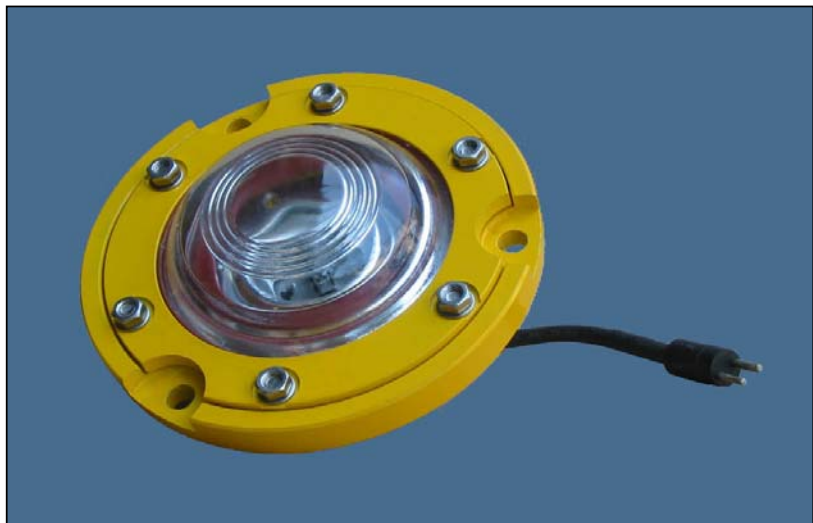


FIGURE 1

INSTALLATION

Mounted on the mounting base placed in concrete.

ELECTRICAL SUPPLY

Through 30-45W 6,6/6,6A isolating transformer.

FINISH

Phosphating and baked polyester electrostatic powder coating. The color is aviation yellow and hardware is made of stainless steel.

WEIGHT AND DIMENSIONS

Net weight is 2,5 kg.
 25mm height from ground level
 Outer diameter is 203mm